

21-22 WEST PARK, HARROGATE, HG1 1BJ

GROUND FLOOR RETAIL TO LET

STAPLETON WATERHOUSE

Location

Positioned on the sought-after eastern side of West Park and overlooking the iconic Stray, this property enjoys a commanding presence just a five-minute walk from the heart of Harrogate town centre.

The immediate area is a well-established destination for premium retail with neighbouring occupiers that reflect the quality of the location and include the renowned Weetons Food Hall, alongside other prestigious brands such as Arlo & Jacob, Moda in Pelle, The Luxe Company, and Cook.

Description

Set within an elegant stone-built terrace (now painted), this attractive property offers a compelling opportunity for retail or lifestyle brands seeking prominence in a vibrant location.

The space features a striking double-fronted display windows that commands attention along The Parade — perfect for impactful brand visibility.

With its classic architecture, slate roof, and adaptable layout, this is a space that offers both charm and commercial potential.



www.stapletonwaterhouse.com

21-22 WEST PARK, HARROGATE, HG1 1BJ

GROUND FLOOR RETAIL TO LET

STAPLETON WATERHOUSE

Accommodation

The unit provides the following approximate dimensions and net floor areas:

Shop front 32'

Shop depth 52'6"

Ground Floor

Sales 2,885 sq ft

Ancillary 680 sq ft

Total

3,565 sq ft

Services

Mains electricity, heating, water, gas and drainage are connected to the property.

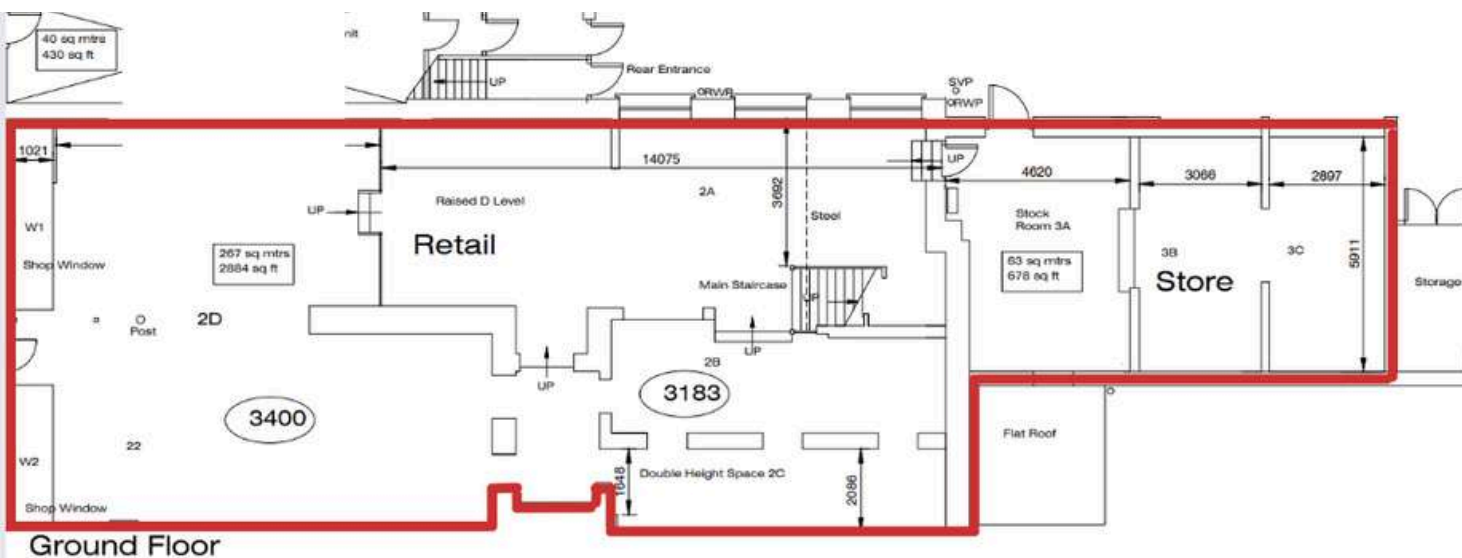
Planning

The property is not listed but it is situated within a conservation area.

Designated as E, under the new Use Classes Order (2020).

EPC

The property is '52 C' rated. A copy of the EPC is available upon request.



www.stapletonwaterhouse.com

21-22 WEST PARK, HARROGATE, HG1 1BJ

GROUND FLOOR RETAIL TO LET

STAPLETON WATERHOUSE



Lease Terms

The property is offered on a ten year lease term on full repairing and insuring terms, subject to a upward only rent review at the end of the fifth year of the term.

Rent

£65,000 per annum plus VAT

Rates

We understand that the retail unit is assessed for rating purposes as follows:

Rateable Value: £14,853
Rates Payable: £7,277.97

VAT

All costs exclusive of VAT.

Legal Costs

Each party will be responsible for their own legal cost incurred in the transaction.

www.stapletonwaterhouse.com

21-22 WEST PARK, HARROGATE, HG1 1BJ

GROUND FLOOR RETAIL TO LET

STAPLETON WATERHOUSE

RICS Code for Leasing Premises

If you are not represented by a RICS member or other property professional, we are obligated to inform you of the existence of the code for leasing commercial premises and its supplemental guide, and we recommend that you obtain professional advice. A copy of this professional statement is available to download on our website.

Further Information

Meggan Godwin
meggan@stapletonwaterhouse.com
Tel: 01904 622226
2 Bar Lane, York, YO1 6JU



Messrs. Stapleton Waterhouse for themselves and for the vendors or lessors of this property whose agents they are give notice that: (i) these particulars are set out as a general outline only for the guidance of intending purchasers or lessees and do not constitute, nor constitute part of, an offer or contract; (ii) all descriptions, dimensions, references to conditions and necessary permission for inspection or otherwise as to the correctness of each of them; (iii) no persons in the employment of Messrs. Stapleton Waterhouse has any authority to make or give any representation whatsoever in relation to this property; VAT Except as expressly stated in these particulars, all prices quoted (whether sale price, premium, rent or otherwise) shall in all cases be deemed to be exclusive of VAT and VAT will be added where applicable. Similarly, unless stated otherwise, any offer made will be deemed to be exclusive of VAT.

www.stapletonwaterhouse.com