

**20 BOOTHAM, YORK, YO30 7BL**

**RETAIL / OFFICE TO LET**

# STAPLETON WATERHOUSE

## Location

The property occupies a prime position on one of the city's most established commercial thoroughfares. Commanding an excellent frontage on Bootham (A19), a principal arterial route leading directly into York's historic city centre, the property benefits from consistently high pedestrian and vehicular traffic.

The surrounding area has established itself as a thriving mixed-use quarter, combining quality residential properties with an eclectic mix of independent retailers, professional services, and cultural amenities. Nearby occupiers include Upside Down Design, Janette Ray Booksellers, Sainsbury's Local, Ashton Estate Agents, and the celebrated York Art Gallery.

## Description

This characterful semi-detached building presents three storeys of versatile retail and office accommodation. The traditional brick construction is complemented by an attractive pitched tiled roof, with distinctive plaster and timber facade detailing that enhances its street presence and period charm.

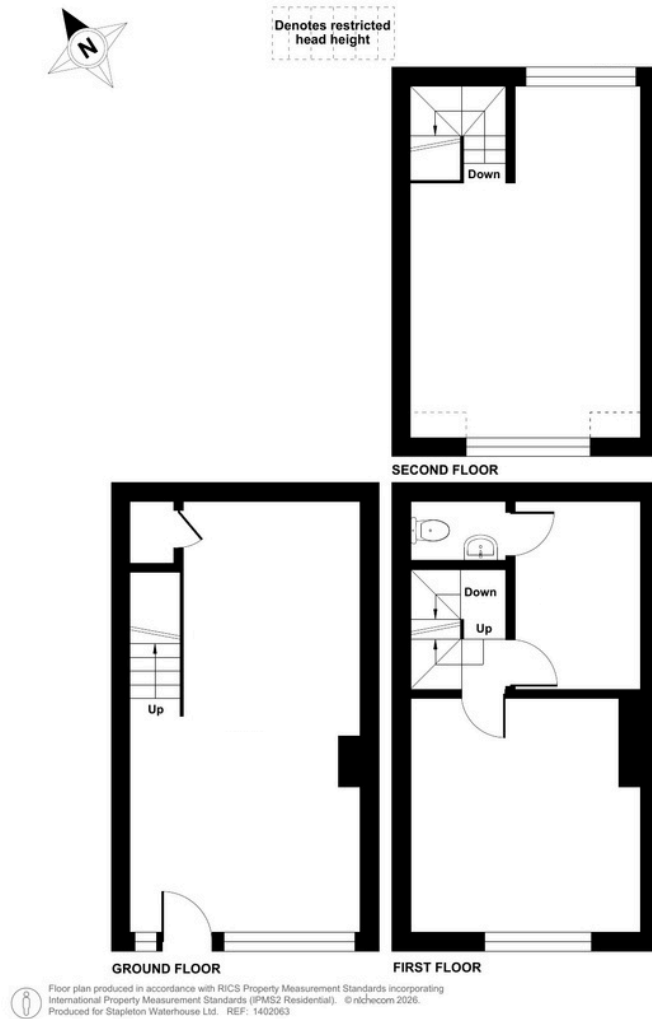


[www.stapletonwaterhouse.com](http://www.stapletonwaterhouse.com)

# 20 BOOTHAM, YORK, YO30 7BL

## RETAIL / OFFICE TO LET

# STAPLETON WATERHOUSE



### Accommodation

The unit provides the following approximate net floor areas:

Shop frontage	11' 8"
Shop depth	23' 6"
Ground Floor	240 sq ft
First Floor	214 sq ft
Second Floor	182 sq ft
<b>Total</b>	<b>636 sq ft</b>

### Services

Mains electricity, water and sewage are connected to the property.

### Planning

The property is not listed but does lie within a conservation area.

Designated as E, under the new Use Classes Order (2020).

[www.stapletonwaterhouse.com](http://www.stapletonwaterhouse.com)



**20 BOOTHAM, YORK, YO30 7BL**

**RETAIL / OFFICE TO LET**

**STAPLETON  
WATERHOUSE**



### Legal Costs

Each party will be responsible for their own legal cost incurred in the transaction.

### RICS Code for Leasing Premises

If you are not represented by a RICS member or other property professional, we are obligated to inform you of the existence of the code for leasing commercial premises and its supplemental guide, and we recommend that you obtain professional advice. A copy of this professional statement is available to download on our website.

### Further Information

David Waterhouse

david@stapletonwaterhouse.com

Tel: 01904 622226

2 Bar Lane, York, YO1 6JU

Messrs. Stapleton Waterhouse for themselves and for the vendors or lessors of this property whose agents they are give notice that: (i) these particulars are set out as a general outline only for the guidance of intending purchasers or lessees and do not constitute, nor constitute part of, an offer or contract; (ii) all descriptions, dimensions, references to conditions and necessary permission for inspection or otherwise as to the correctness of each of them; (iii) no persons in the employment of Messrs. Stapleton Waterhouse has any authority to make or give any representation whatsoever in relation to this property; VAT Except as expressly stated in these particulars, all prices quoted (whether sale price, premium, rent or otherwise) shall in all cases be deemed to be exclusive of VAT and VAT will be added where applicable. Similarly, unless stated otherwise, any offer made will be deemed to be exclusive of VAT.

**www.stapletonwaterhouse.com**